



Villa Cayo Ce Agua

The Palm Jumeriah | N Frond

DUBAI | LONDON

Welcome

Villa Cayo Ce Agua is a once-in-a-lifetime property opportunity on Palm Jumeirah, one of the world's most iconic landmarks and prominent addresses.

Pioneering a new era of unparalleled European craftsmanship in the UAE, Villa Cayo Ce Agua's sleek modern exterior combines an unmatched luxurious interior. A vast combination of natural materials, uncompromised quality and meticulous attention to detail creates an unrivalled aesthetic.

This new standard of ultra-luxury living will make Villa Cayo Ce Agua the ultimate residence and one of the Palm's most desirable pieces of architecture.





Features

Villa Cayo Ce Agua is a 12,000 sqft five-bedroom, seven-bathroom property with many of the finest marbles and travertines in the European market. Natural and exotic veneers throughout the property complement and amplify the villa's serene ocean surroundings.

The villa's striking features are present throughout. Upon entry, you are met with a glass panoramic lift and the staircase, a masterpiece of bespoke design.

This incredible residence has panoramic six-meter glass doors with a view of the featured magnesium pool and the outdoor BBQ to accompany it.

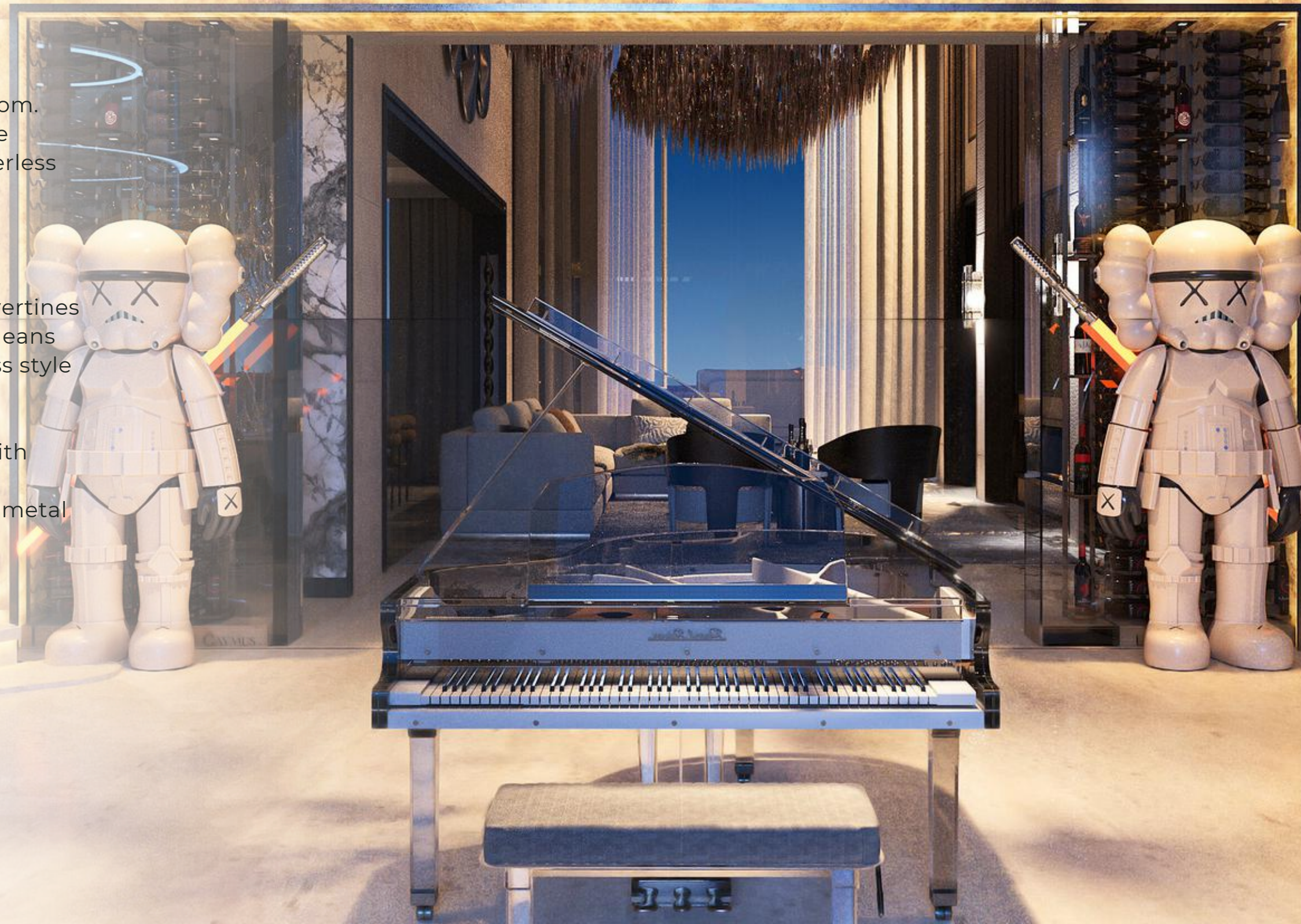
The basement contains a unique four-car garage with a custom-made turntable and scissor lift. The villa also has a cinema with a Bang & Olufsen sound system designed to exceed any homeowner's needs.

Interior

Villa Cayo Ce Agua boasts bespoke joinery in every room. Our commitment to unique design, innovation, and peerless craftsmanship makes this property truly special.

The selection of the finest European marbles and travertines throughout the property means every space exudes timeless style and sophistication.

The ceilings are adorned with painted finishes, plaster mouldings, and decorative metal touches, adding a touch of grandeur to every room.





Living Space

The main living spaces are featured here, with a footprint of over 2,700 sq ft. These include two living rooms, a dining room, a bar area for entertaining, and a service kitchen.

A striking tailor-made Italian Officine Gullo kitchen ensures showstopping elegance, cabinetry and the finest European marble countertops. Illuminated by Sans Souci custom lighting, every culinary moment is elevated to an experience.



Outdoor Living

The outdoor living area is an oasis of multisensory indulgence. The breathtaking exterior showcases a magnesium glass infinity pool. Magnesium pools reduce the need for chemicals by up to 50%, making the water feel softer with a more natural scent.

An outdoor BBQ, bespoke aluminium pergola, and dining area have an integrated sound system with contemporary outdoor lighting and water and fire features. Combined, these add a touch of magic and create an outdoor ambience nothing short of extraordinary.





Corinthia.

Bedrooms

The highlight of the bedrooms is the master bedroom, complete with a beautifully lit and finished dressing room, walk-in wardrobe, master bathroom and personal terrace.

Each exquisite bedroom is luxuriously designed with sumptuous soft furnishings for comfort and style.







Bathrooms

Using the finest selection of marble worldwide, every fixture and surface has a timeless elegance and unparalleled craftsmanship. Contemporary Gessi fittings and custom-made Italian bathtubs create the feeling of being in a luxury spa.







Basement

Spanning 3,500 sqft., the multipurpose basement is designed to captivate and be enjoyed by the entire family. It is the epitome of ultra-luxe living.

The four-car garage has a panoramic glass car lift, turntable, exquisite lighting, mirrors and bronze metal finishes.

The basement is also home to a games room and a home cinema. Wrapped in sumptuous suede fabric, it has been designed for an immersive audio-visual experience with Bang & Olufsen speakers and a Bowers & Wilkins projector.











Wellness & Work

A state-of-the-art gym and wellness area, including a sauna, steam room, and cold plunge, enhance well-being, relaxation, and vitality in this luxury residence.

Furthermore, an office space is also located on the upper floor, allowing one to balance work and wellness.



Floor Plans

Built-Up Area Calculations (BUA)

FLOOR | AREA | SQFT

Basement | 4405.99

Ground | 4036.14

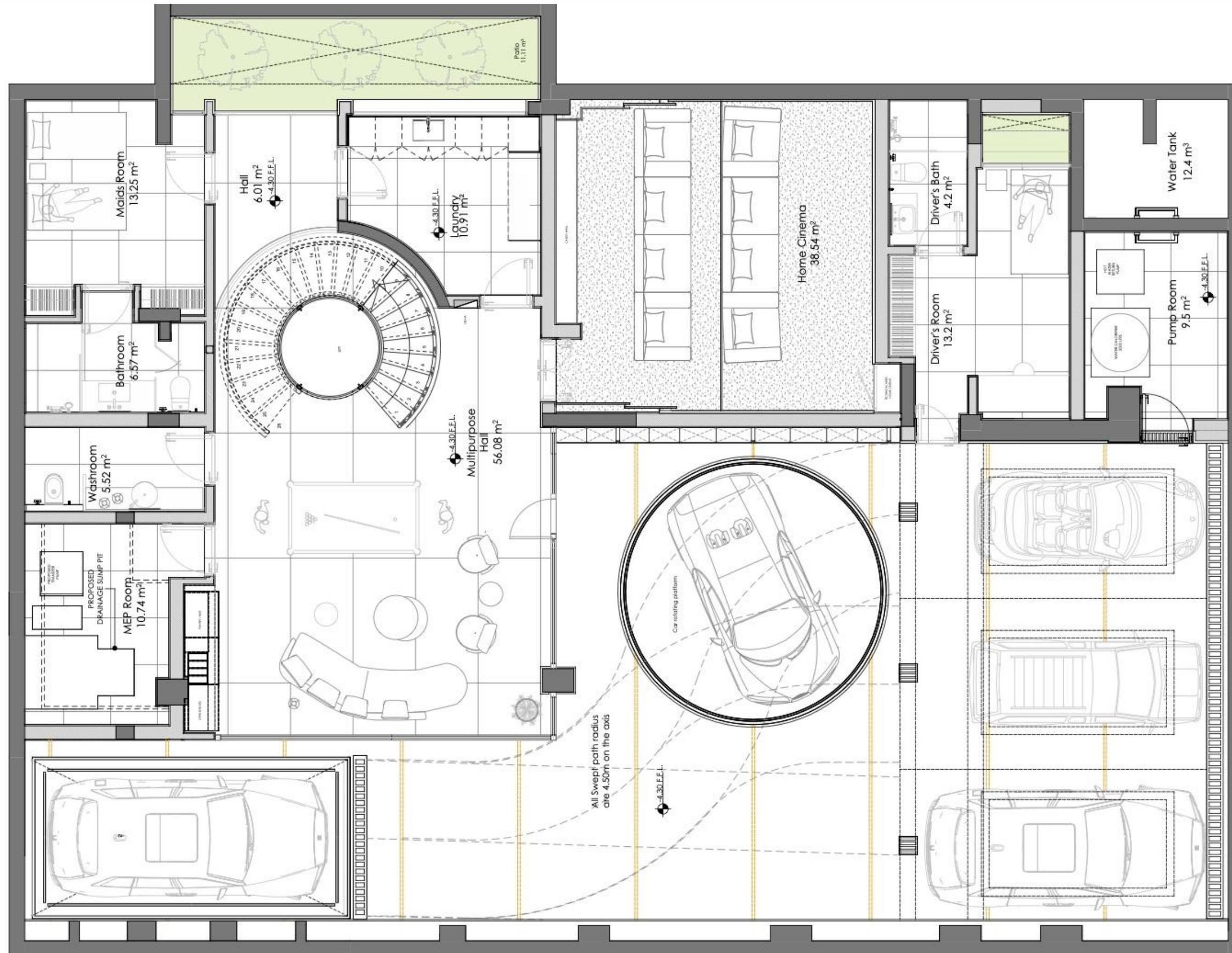
Swimming Pool | 994.91

First | 2582.69

Roof | 3665.33

Top of Roof | 1634.39

TOTAL | 17,319.45



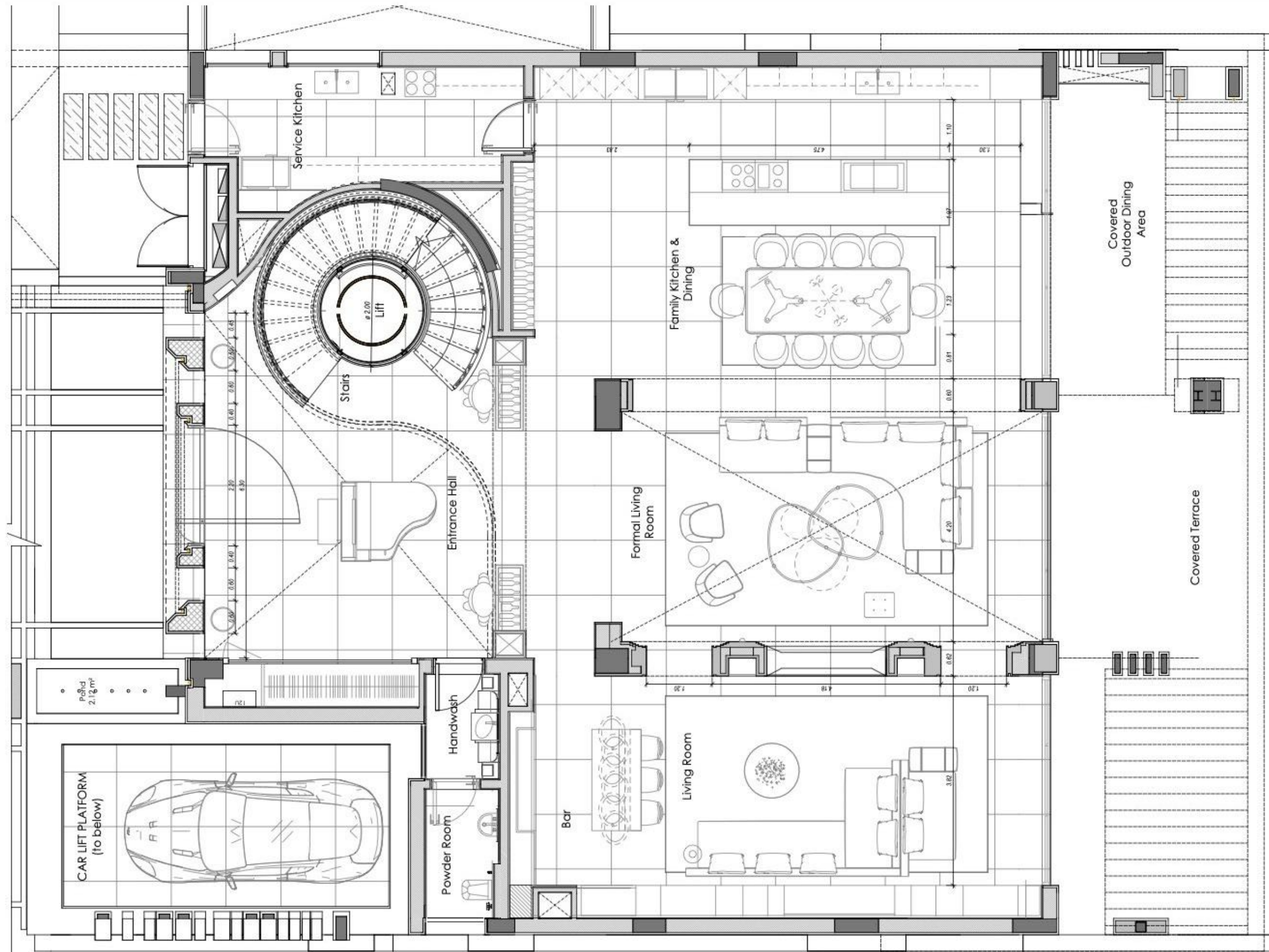
Basement

Multipurpose space with games room.

Garage
 Parking for five cars
 Car rotating platform
 Bespoke Car lift
 Three parking spaces

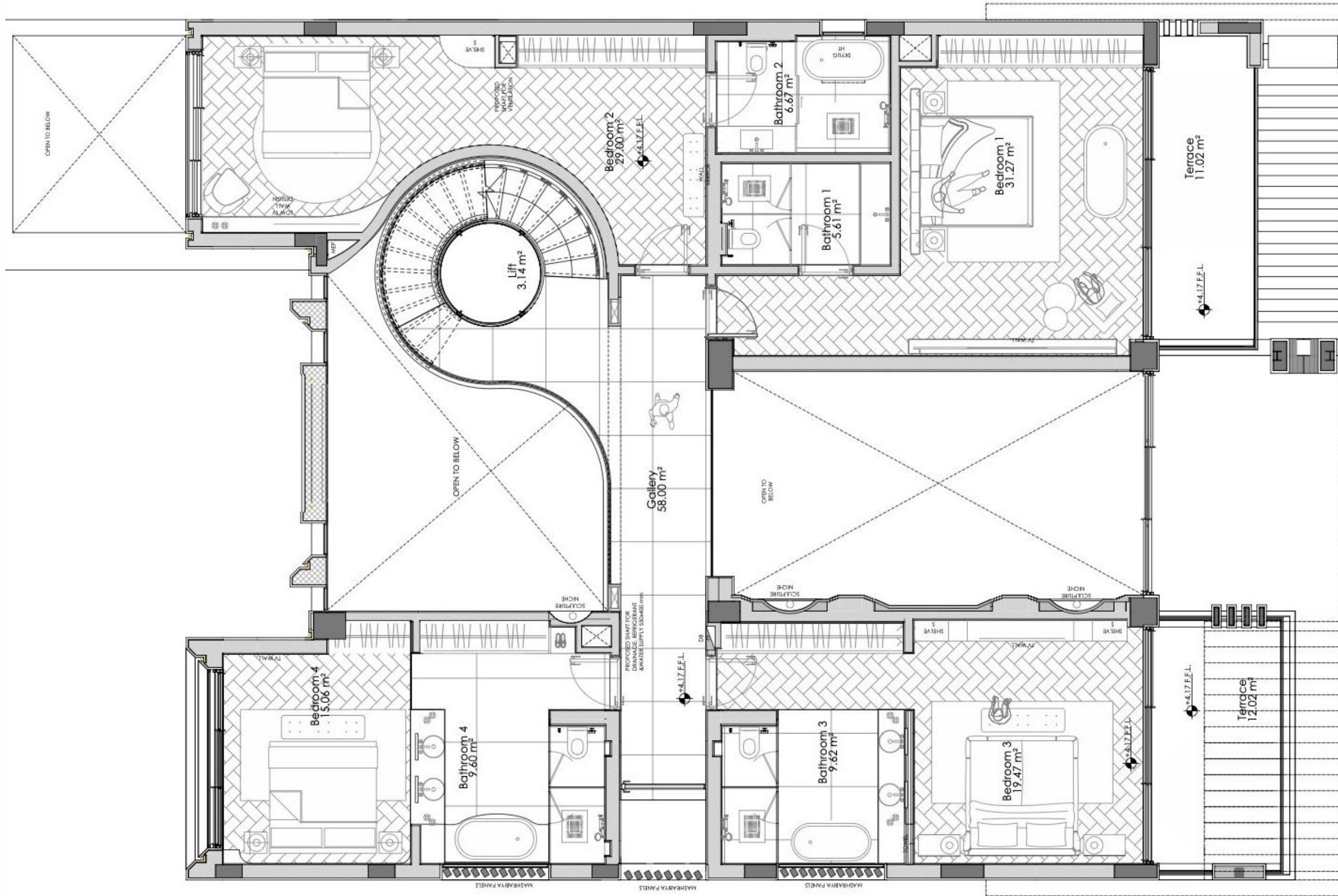
Staff
 Maids room | Bathroom |
 Washroom
 Drivers Room | Drivers Bathroom

Services
 Water Tank | Pump Room
 Laundry Room Mechanical,
 Electrical and Plumbing
 Engineering (MEP) Room



Ground

- Entrance Hall With Glass Circular Staircase
- Panoramic Glass Passenger Lift With Bronze Metal Finish
- Formal Living Room
- Family Living Room
- Bar
- Family Kitchen & Dining
- Serviced Kitchen
- Outdoor Space
- Covered Outdoor Dining Area
- Covered Terrace
- Swimming Pools
- Powder Room
- Hand Wash



First

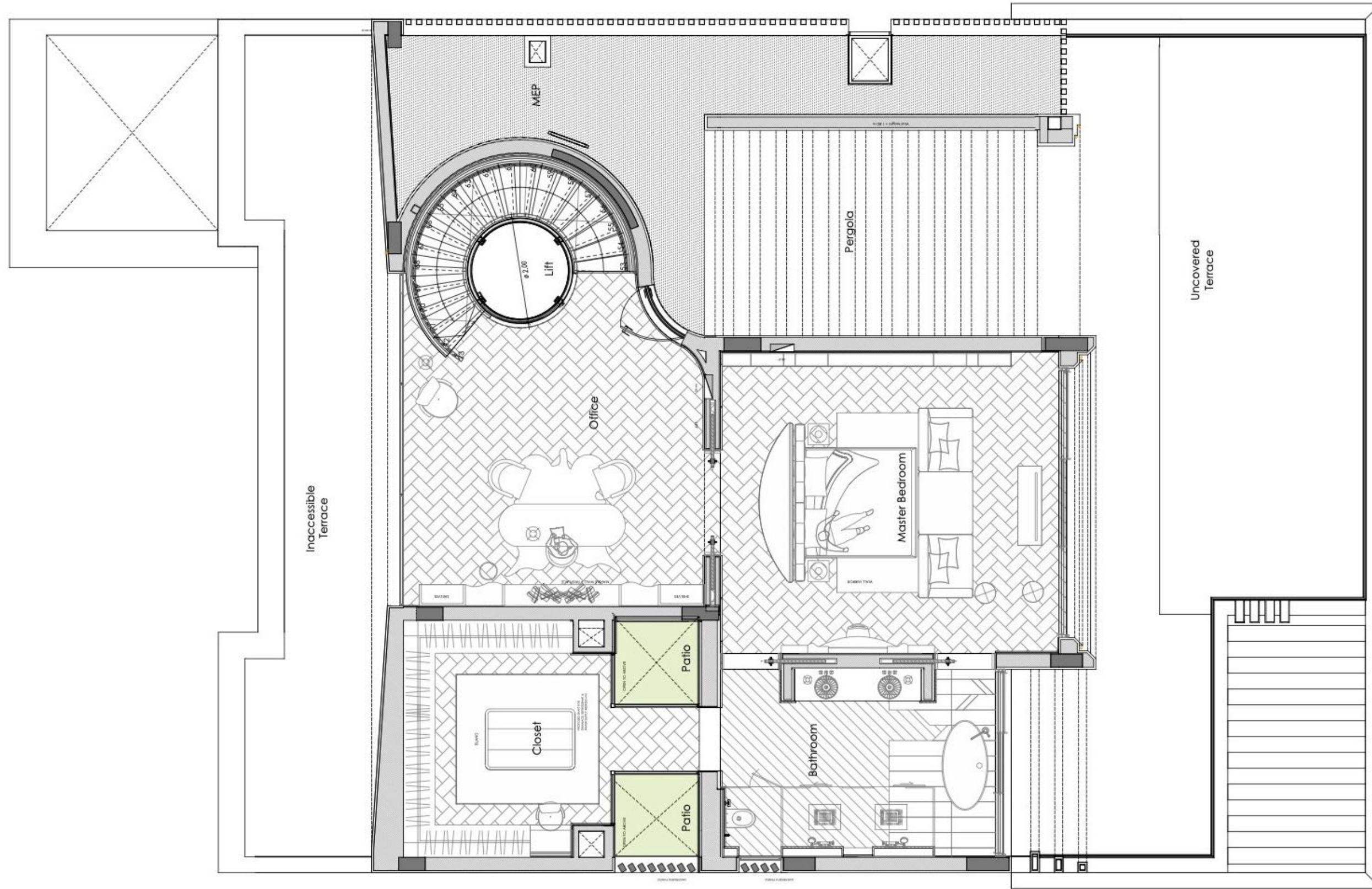
Gallery

Bedroom 1
 Bedroom With Ocean View And
 Terrace Ensuite
 Bathroom
 TV Wall

Bedroom 2
 Bedroom
 Ensuite Bathroom

Bedroom 3
 Bedroom With Ocean View and
 Terrace
 Ensuite Bathroom
 TV Wall

Bedroom 4
 Bedroom
 Ensuite Bathroom



Roof

- Master Bedroom
- Bedroom With Ocean View and Terrace
- Ensuite Bathroom with Ocean View
- Walk-in Wardrobe with Dressing Room and Patio Areas
- Pergola
- Office
- Gym Services
- MEP Room

An aerial, high-angle view of a modern, multi-story building at night. The building features large glass windows and balconies. The interior of the upper floors is visible, showing a living area with a sofa and coffee table, a dining area with a table and chairs, and a bathroom with a bathtub. The exterior of the building has a dark, textured facade. A large, illuminated swimming pool is visible on the ground floor. The building is surrounded by lush greenery, including palm trees and other tropical plants. The overall atmosphere is sophisticated and modern.

Specifications

GENERAL

LIGHTING | Sans Souci Custom Made
CEILING | Painted | Plaster Moulding | Decorative Metal Finishes
FLOORING | European Marble | Travertine Treads | Selection of Oak Floors
STAIRCASE | Bespoke Made| Travertine Treads | Curved Glass | Bronze Metal Finished Handrails
MARBLE | A Selection of the Finest European Marbles and Travertines
LIFT | Bespoke Car Lift | Panoramic Glass Passenger Lift with Bronze Metal Finish
AIRCON | Slimline Plaster in Grills
AUDIOVISUAL | Bang & Olufsen | Bowers & Wilkins GLAZING | Panorama Slimline Floor to Ceiling Glazing

LIVING & BAR

FURNITURE | Custom Made
FINISHES | European Veneers, including Rosewood, Macassar and Ash

FAMILY KITCHEN

FURNITURE | Officine Gullo | Italian-made
COOKER | Officine Gullo | Italian-made
OVEN | Gaggenau
MICROWAVE | Gaggenau
DISHWASHER | Gaggenau
REFRIGERATOR | Gaggenau
EXTRACTION OFFICINE | Gullo | Italian-made
WINE FRIDGE | Sub Zero | Bespoke TAP | Gessi
WORKTOP | European Marble
WATER FILTER SYSTEM | Osmosis

SERVICE KITCHEN

FURNITURE | Stainless Steel Commercial Line
COOKER TOP | Tecnoinox x4 Burner Gas Range DISHWASHER | Electro Bar Steam
REFRIGERATOR | Turboair Under the Counter | Stainless Finish
SAFETY | Avenger Fire Suppression System
TAP | Echermann Spray Unit
WORKTOP | Stainless Steel
WATER FILTER SYSTEM | Osmosis

BEDROOMS

FURNITURE | Custom Made Joinery
WARDROBES & DRESSING ROOMS | Selection of European Veneers | Oak | Ash | Macassar
MARBLE | Selection of finest European Marbles

BATHROOMS & ENSUITES

BATHTUB | Italian Custom Made
FITTINGS | Gessi
MARBLE | Selection of Marble from Around the World

GYM & WELLNESS

GYM EQUIPMENT | Techno Gym Smart Equipment with a Selection of Free Weights
ICE BATH | Brass Monkey Ice Bath with Smart System Integration and Filtration
STEAM ROOM | SHOWER | Custom Made

CINEMA

SPEAKERS | Bang & Olufsen
PROJECTOR | Bowers & Wilkins
WALLS & CEILING | Acoustic with Suede Fabric Snacks and Beverage cabinet | Custom Made

OUTDOOR KITCHEN & ENTERTAINING

GRILL | Wolf
PIZZA OVEN | Flame Works
REFRIGERATORS | Subzero
PERGOLA | Aluminium | Bespoke Finish
SPEAKERS | Bose ILLUMINATION | Outdoor Lighting System
LANDSCAPE | Travertine and Porcelain
FIREPIT | Bio Ethanal



Villa Phantom

The Palm Jumeriah | N Frond

DUBAI | LONDON